



Picture: Richard Radevsky

Join IMIA working Group 136(25)

Long distance transmission projects

To bring renewable energy from areas where it is plentiful to areas with high power demand long distance power transmission lines are being developed. The working group paper will cover:

- Long distance power transmission technology
- Risks associated with construction of such projects including natural disasters, adverse weather, equipment failures during testing and commissioning, terrorism and sabotage, liabilities cybersecurity, supply chain issues and others
- Codes of practice and legislation
- Business models and business interruption issues
- Underwriting Considerations – Underwriting information and guidelines
- Suitability of existing construction wordings and proposed special clauses & exclusions
- Regulatory, political and environmental issues
- Case Studies and claims
- Operational risks
- Operational coverage
- Maintenance
- Surveys and risk management



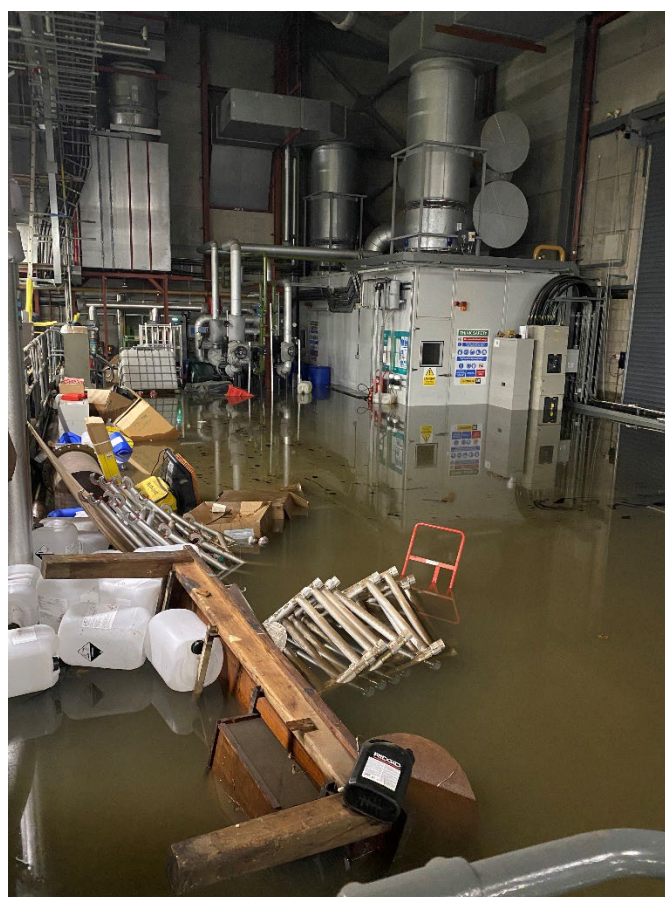
Picture: Richard Radevsky

Join IMIA working Group 137(25)

Construction and operation of carbon capture and storage

Carbon capture and storage projects are one way of reducing carbon emissions and becoming increasingly common. The working group paper will cover:

- Different forms of carbon capture and storage technology
- Key components
- Technology and performance risks including those associated with recently developed technology
- Underwriting Considerations – Underwriting information and guidelines
- Suitability of existing construction and operational wordings and proposed special clauses & exclusions
- Operational risks and maintenance requirements
- Regulatory and permitting issues, public perception and opposition
- Third party liability risks including those associated with seismic events
- Case Studies and claims
- Codes of practice and legislation (including testing and standards)
- Storage site and injection well integrity and maintenance
- Surveys and risk management



Picture: Richard Radevsky

Join IMIA working Group 138(25)

Impacts of climate change on infrastructure risks

Climate change poses significant challenges to insurable infrastructure risks impacting transportation, energy, water, telecommunications and others. The working group paper will cover:

- Increased frequency and severity of extreme weather events (hurricanes, floods, droughts, heatwaves and wildfires) plus sea level rise and coastal erosion
- Infrastructure vulnerability
- Measures to increase infrastructure resilience
- Underwriting Considerations – Underwriting information and guidelines
- Suitability of existing wordings and proposed special clauses & exclusions
- Impact on insurance market and innovative risk transfer solutions
- Case Studies and claims
- Limits of insurability and interaction with regulators and governments
- Surveys and risk management



Picture: Richard Radevsky

Join IMIA working Group 139(25)

Failures in protection and emergency/backup systems

Protection systems and emergency back-up systems are critical to prevent and/or mitigate failures and disruptions. They are however not immune to failures themselves which can have severe consequences. The working group paper will cover:

- Common types of protection and emergency back-up systems
- Vulnerability to failures (such as component failures, power supply interruptions, communication failures, human error, cyber threats, environmental factors, design flaws and inadequacies, logic flaws, inadequate training and documentation)
- Testing and commissioning requirements and periodic re-testing
- Maintenance requirements and building in robustness
- Underwriting Considerations – Underwriting information and guidelines
- Suitability of existing engineering wordings and proposed special clauses & exclusions
- Case Studies and claims
- Codes of practice and legislation
- Surveys and risk management